



# RUGER AMERICAN® RIFLE GENERATION II

## STOCK WEIGHT KIT RIFLE MUST BE UNLOADED PRIOR TO DISASSEMBLY

### STOCK WEIGHT KIT INCLUDES:

- (6) 4 oz. Steel Weights
- (2) Lock Nuts
- (1) Weight Holder
- (1) Bolt
- (1) Flat Washer

### TOOLS NEEDED (Not Included):

- 3/16" Hex Wrench
- 7/16" Open-end Wrench
- 1/8" Hex Wrench, Punch, or similar tool

**NOTE:** Individual weights may vary slightly. Casting gates, parting lines, and variations in surface finish, color, coating, and markings are normal.

The weight kit comes preassembled with six (6) 4 oz. weights installed in the weight holder. Individual weights can be removed to suit your needs.

### TO CHANGE WEIGHTS WITHIN THE HOUSING:

1. Hold the bolt using a 3/16" hex wrench. Use a 7/16" wrench to turn the outermost nut counterclockwise and remove it. Next, remove the innermost nut.
2. Pull the bolt from the holder and remove the desired number of weights from the assembly. **NOTE:** Retain any unused weights for future use.
3. With the desired number of weights installed, insert the bolt into the weight holder from the rear through the installed weight(s) and install one lock nut (See Figure 3).

**NOTE:** Weights install in one direction only. If the bolt will not pass through a weight, change its orientation as depicted in Figure 3 so that the bolt freely passes through the weight.

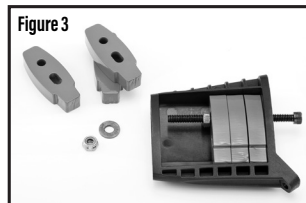
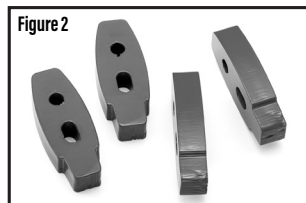
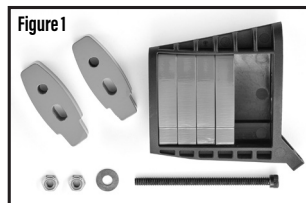
4. Hold the nut with the 7/16" wrench. Use the 3/16" hex wrench to turn the bolt clockwise to tighten the assembly until the weights are held snugly against each other and the weight holder. The tip of the bolt should protrude slightly from the weight holder.

**NOTE:** Do not overtighten the nut as you may damage the weight holder.

5. Place the flat washer over the exposed end of the bolt and thread the second lock nut onto the bolt. Hold the bolt with the 3/16" hex wrench and use the 7/16" wrench to turn the second lock nut clockwise until it is snug against the weight holder (See Figure 4).

**NOTE:** Do not overtighten the nut as you may damage the weight holder.

**NOTE:** The lock nut has a nylon insert that resists loosening during normal operation. No additional thread locking compound is required.

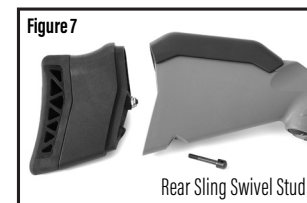
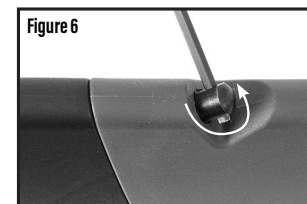


### TO INSTALL THE STOCK WEIGHT KIT:

1. **KEEP THE RIFLE POINTED IN A SAFE DIRECTION!** Put the safety in the "SAFE" position (middle position marked with one white bar visible) if the firing pin is cocked (See Figure 5).
2. **CHECK TO BE CERTAIN THAT THE CHAMBER AND MAGAZINE ARE EMPTY.** Remove the magazine.
3. Insert a 1/8" hex wrench or similar tool into the rear sling swivel hole and turn it counterclockwise (see Figure 6) until it can be removed from the stock.
4. Pull the recoil pad assembly off the stock (See Figure 7).
5. Install the weight holder into the empty cavity in the rear of the buttstock as shown in Figure 8. Press in on the weight holder until the hole in the stock and the hole in the weight holder are aligned.
6. Place the recoil pad assembly onto the end of the stock (See Figure 9). Insert the rear sling swivel stud and turn it clockwise to begin tightening it. Insert a 1/8" hex wrench or similar tool into the rear sling swivel stud hole and turn it clockwise until it is snug. Do not overtighten the sling swivel stud. Installed correctly, the recoil pad assembly should be secure on the stock and the hole in the sling swivel stud should align with the sides of the stock.



Safety selector in the "SAFE" position (middle position marked with one white bar visible). The bolt handle can be raised when the safety selector is in this position.



### TO REMOVE AN INSTALLED WEIGHT KIT:

Keep the rifle pointed in a safe direction! **CHECK TO BE CERTAIN THAT THE CHAMBER AND MAGAZINE ARE EMPTY.**

1. If the recoil pad is installed, remove it as described in steps 1 through 4 of the installation instructions, above.
2. Stand the rifle muzzle up so both points (heel and toe) of the stock are on a flat surface (see Figure 10). Be sure to protect hard surfaces with a carpet or newspaper to prevent the stock from being damaged.
3. Lift the rifle and gently "bump" it against the flat surface repeatedly, ensuring that both the heel and toe of the stock make contact with the flat surface at the same time. The gentle taps will break the tapered weight holder free of the stock.
4. Reinstall the recoil pad as described in step 6 of the installation instructions, above.

